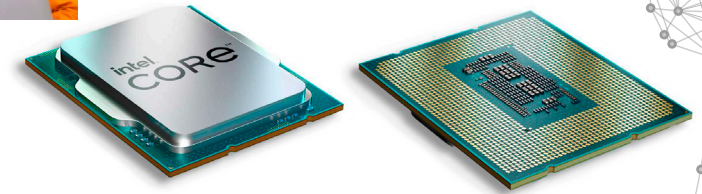
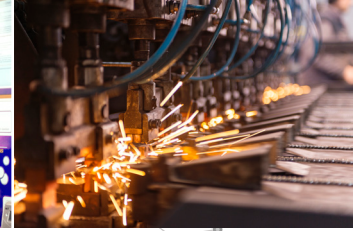
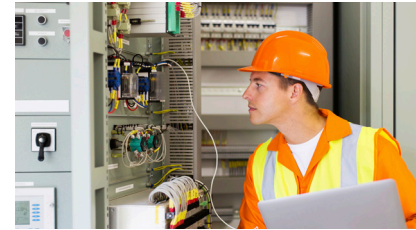
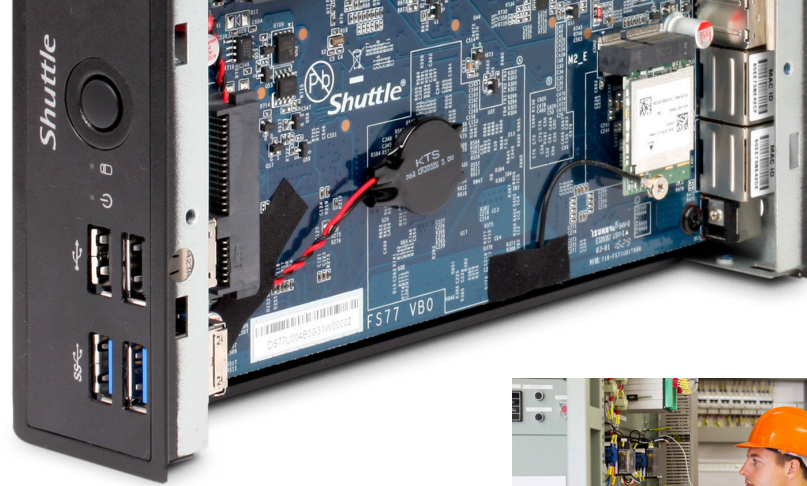
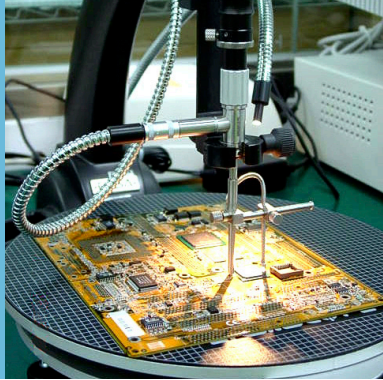


*Shuttle*<sup>®</sup>

*PRODUCTS 2023*



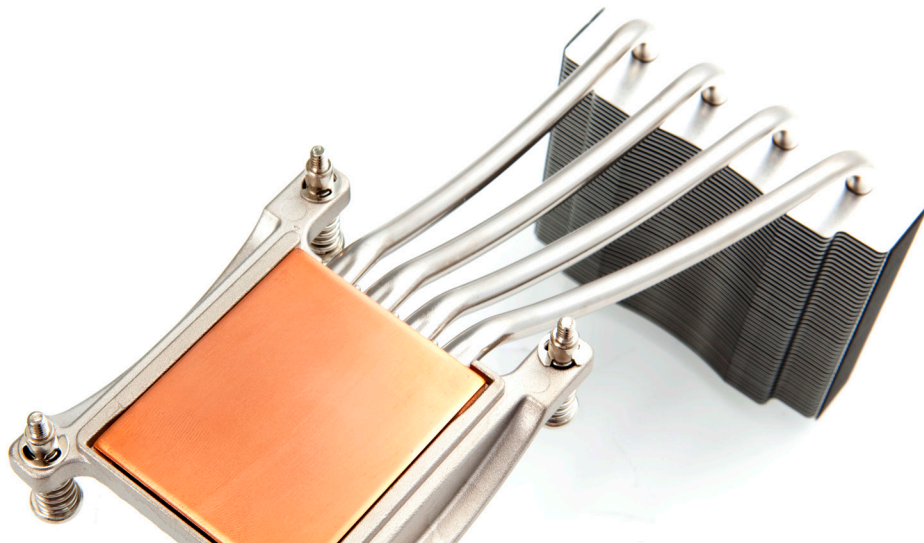


## WELCOME TO THE WORLD OF SPACE-SAVING MINI PCs

It all began in 1983. We started early and have been a genuinely pioneering force in the industry since 2001. Over the past 22 years, we have launched an array of space-saving and energy-efficient PCs for every area of application. The unique feature of our machines is the use of sophisticated cooling concepts for minimum operating noise. We manufacture reliable Slim PCs, Mini PCs, and All-in-One PCs for the office – and for extremely demanding professional applications.

## COMPANY PROFILE

Established in 1983 in Taiwan, we specialise in the development and production of space-saving Mini PCs. The stock market listed company is represented globally through subsidiaries in Germany, the USA, China and Japan. Since 2001 attractive PC solutions in an array of formats designed for virtually every area of application have been the main business focus of Shuttle. We aim to develop individual solutions for the demanding requirements of customers. Technical innovations such as new chipsets, processors and connections are regularly integrated in new models within a short time of product launch. The range of products has recently been expanded to include fanless Slim PCs.





## MILESTONES

- 2022 — Shuttle introduces industrial-grade panel PCs
- 2021 — Shuttle releases Box-PCs
- 2020 — First Bar-Type Signage Display from Shuttle
- 2019 — Shuttle presents solution for edge computing
- 2018 — Shuttle adds 11.6" model to its All-in-One PC product range
- 2017 — Shuttle launches its first model with HDMI 2.0
- 2016 — Shuttle launches its first model with vPro technology
- 2015 — Shuttle launches its first model with IP54 certification
- 2014 — For the first time Shuttle offers ARM-based PCs
- 2013 — Shuttle celebrates its 30th anniversary since its establishment
- 2012 — Launch of particularly robust and fanless industrial PCs
- 2012 — Introduction of OMNINAS (NAS solutions)
- 2012 — Shuttle adds 18.5" model to its All-in-One PC product range
- 2011 — Shuttle launches the world's fastest Mini PC
- 2010 — Shuttle launches its first 1-litre PC (fanless)
- 2009 — Shuttle starts to use new production facilities in China
- 2009 — Shuttle starts development and production of OEM notebooks
- 2009 — Shuttle launches its first All-in-One PC (fanless)
- 2008 — Shuttle launches Mini PC with integrated touchscreen
- 2006 — Shuttle launches its first 3-litre PC

- 2005 — Shuttle opens branch office in China
- 2005 — Shuttle launches its first Media-Center XPC
- 2005 — First Mini PC in the world with two graphics cards in SLI mode
- 2005 — Tom's Hardware awards Shuttle 'Best SFF PC Maker'
- 2004 — Shuttle introduces XPC complete system solutions
- 2004 — Shuttle establishes Japan branch office
- 2004 — Over one million XPCs shipped
- 2002 — Shuttle introduces the patented 'I.C.E.' heatpipe cooling system
- 2001 — Shuttle launches first Shuttle XPC Mini PC
- 2000 — ISO-14001 certification
- 2000 — Shuttle Inc. becomes a publicly listed company (TAIEX: 2405)
- 1999 — ISO-9001 certification
- 1998 — Shuttle develops the world's first 17×17cm motherboard for OEM market
- 1997 — Shuttle establishes 3,500 m<sup>2</sup> production facilities in Taoyuan, Taiwan
- 1995 — Shuttle recognised as the world's 5<sup>th</sup> largest mainboard maker
- 1995 — ISO 9002 and TÜV certification
- 1990 — Shuttle Computer Handels GmbH established in Germany
- 1988 — Shuttle Computer Group USA established
- 1984 — Shuttle begins manufacturing motherboards in Taoyuan, Taiwan
- 1983 — Shuttle Inc., Taiwan established (formerly Holco)

# SOLUTIONS FOR ANY KIND OF APPLICATIONS

*Our space-saving Mini PCs are real multi-purpose machines. This is just a small selection of possible scenarios that Shuttle holds a solution for.*

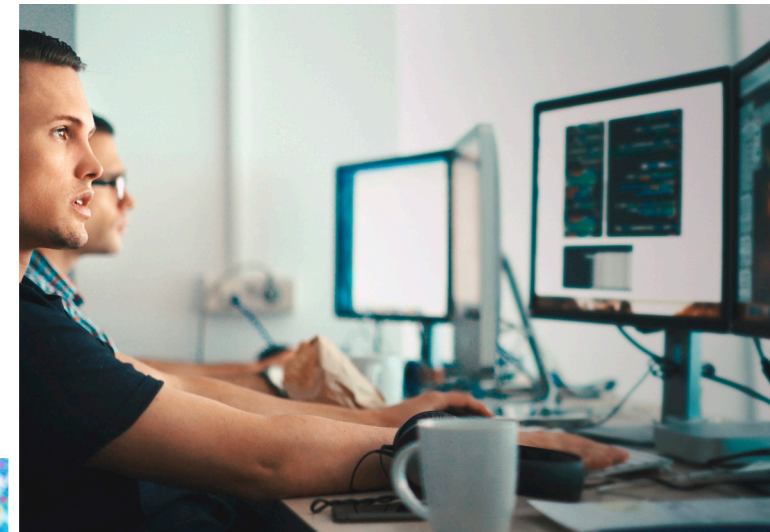


## DIGITAL SIGNAGE

Digital advertising areas, information screens and electronic signs are now an integral part of everyday life. Shuttle supplies the right player for every scenario – and for a wide range of operating systems. These compact machines are all characterised by their robust design. They range from ultra-high-performance models and machines with innumerable ports and connections to low-energy, continuously running fanless devices. High-strength steel and a broad temperature spectrum enable installation even in difficult environments.

## POS

The purchase of a POS system often represents a considerable capital investment. However, with Shuttle's energy-saving All-in-One PCs in your desired configuration, you save money. Thanks to the tilting pedestal and standard installation mount, these machines can be installed almost anywhere. And our new IP54-compliant models are now even more robust. Maximum flexibility in terms of choice of hardware and software enables the creation of a POS solution that exactly meets your requirements.



## SERVER

As a UTM/firewall, file server, web server or mail server and much more – the Mini-PCs from Shuttle cut a fine figure. Two network connections (and even more via expansion cards) as well as Wi-Fi make it possible to set up versatile server services or integrate them into existing complex network structures. Powerful processors guarantee a high packet throughput rate and up to 128 GB of memory enable virtualisation. Shuttle offers various solutions in different chassis formats for your specific server.



## INDUSTRY

Even in tough environments in which supreme reliability particularly matters, people choose products from Shuttle. Are you looking for fanless Mini-PCs for production environments and logistics centres? Perhaps robust technology for inter-linked control cabinets with lots of inputs and outputs? Even versions with superb performance for demanding real-time calculations in the area of image recognition and data capture are available. Allow yourself to be impressed by our variety of products. If you have any questions, we will be happy to advise you.

## OFFICE

It is important to be able to work without disturbances and distracting noises. And a Shuttle slim desktop PC is the ideal companion at work – it stays discreetly in the background, but is also able to spring into action when needed. These tiny PC solutions meet your requirements precisely. You have a wide choice of processors, for example the energy-saving, dual-core Intel Celeron or the extremely powerful Intel Core i7 models. Is just 8 GB plenty for you or do you need 64 GB of memory? And what about the number of drives and network and data connections? Whatever your requirements, we have the right model for you.



## GAMING

Over 60 frames per second, in highest resolution and with maximum depth of detail guarantee thrilling matches on the screen. The XPC cubes from Shuttle offer space for current Intel Core processors, up to 128 GB of RAM and the latest dual-slot graphics cards. In conjunction with a quick NVMe SSD, you can move on to the next map and a higher level without a long wait. One major advantage of Mini-PCs is their space-saving size. This means that a Shuttle XPC cube can swiftly be stored away in a small bag and then easily set up anywhere.

# Robust Panel PCs

15.6" screen, single-touch, resistive

XPC ALL-IN-ONE



## X50V8

## X50V8U3

CASE CHARACTERISTICS

- Plastic case with integrated touchscreen
- Available in black or white
- Movable stand or 75/100 VESA mount
- Connectors on the side and bottom of the case
- One bay for a 2.5" HDD/SSD
- One slot for an NVMe SSD
- Status LEDs
- Camera with 2 megapixel
- Stereo speakers and microphone
- Always on jumper
- External power supply
- Weight 3,500 g
- Fanless cooling
- IP54 protection of front panel
- Ambient temperature range 0–40 °C
- Air humidity range 10–90 %
- 4.2 × 39.1 × 32.7 cm (LWH)

PERFORMANCE FEATURES

<b>Display</b>	1366×768, resistive single-touch screen, 39.6 cm (15.6")	
<b>Processor</b>	Intel Celeron 5205U	Intel Core i3-10110U
<b>Slots</b>	1× M.2-2230, 1× M.2-2280	
<b>Empty slots</b>	1× M.2-2280	
<b>Memory</b>	Up to 2× 32 GB DDR4 SO-DIMM (64 GB)	
<b>Graphics</b>	Intel UHD Graphics for 10 <sup>th</sup> Gen Intel Processors	
<b>Display connectors</b>	1× HDMI 1.4b, 1× VGA	
<b>Network</b>	1× Gigabit Ethernet (Intel i211), Wi-Fi (ac), Bluetooth	
<b>External connections</b>	4× USB 3.2 Gen 1 (5 Gbit) type A, 2× USB 2.0 type A, audio, mic	
<b>Internal connections</b>	1× USB 2.0 Typ A, 1× SATA	
<b>Drives</b>	1× 2.5" SATA, 1× NVMe, SD-Cardreader	
<b>Power supply</b>	65 Watt, 19 Volt DC	
<b>Supported operating voltage</b>	12 Volt ±5 % and 19 Volt ±5 %	
<b>OS support</b>	Windows 10, Windows 11, Linux (64 Bit)	
<b>Further information</b>	<a href="http://go.shuttle.eu/D81Am">go.shuttle.eu/D81Am</a>	<a href="http://go.shuttle.eu/OboQc">go.shuttle.eu/OboQc</a>
<b>Options</b>	1× Parallel + 2× RS-232 or 1× Parallel + 4× RS-232 + 1× DIO	

# 15.6" screen, multi-touch, capacitive

# Robust Panel PCs



XPC ALL-IN-ONE

**P52U**

**P52U3**

**CASE CHARACTERISTICS**

- Plastic case with integrated touchscreen
- Movable stand or 75/100 VESA mount
- Connectors on the side and bottom of the case
- One bay for a 2.5" HDD/SSD
- One slot for an NVMe SSD
- Camera with 2 megapixel
- Stereo speaker and microphone
- Always on jumper
- External power supply
- Weight 3,250 g
- Fanless cooling
- IP54 protection of front panel
- Ambient temperature range 0–40 °C
- Air humidity range 10–90 %
- 4.0 × 39.4 × 27.3 cm (LWH)

**PERFORMANCE FEATURES**

<b>Display</b>	1920×1080, capacitive 10-point multi-touch screen, 39.6 cm (15.6")	
<b>Processor</b>	Intel Celeron 5205U	Intel Core i3-10110U
<b>Slots</b>	1× M.2-2230, 1× M.2-2280	
<b>Empty slots</b>	1× M.2-2230, 1× M.2-2280	
<b>Memory</b>	Up to 2× 32 GB DDR4 SO-DIMM (64 GB)	
<b>Graphics</b>	Intel UHD Graphics for 10 <sup>th</sup> Gen Intel Processors	
<b>Display connectors</b>	1× HDMI 1.4b, 1× VGA	
<b>Network</b>	1× Gigabit Ethernet (Intel i219)	
<b>External connections</b>	2× USB 3.2 Gen 1 (5 Gbit) type A, 2× USB 2.0 type A, 2× RS-232, audio, mic	
<b>Internal connections</b>	1× USB 2.0 type A, 1× I <sup>2</sup> C, 1× SATA	
<b>Drives</b>	1× 2.5" SATA, 1× NVMe, SD card reader	
<b>Power supply</b>	65 Watt, 19 Volt DC	
<b>Supported operating voltage</b>	12 Volt ±5 % and 19 Volt ±5 %	
<b>OS support</b>	Windows 10, Windows 11, Linux (64 Bit)	
<b>Further information</b>	<a href="http://go.shuttle.eu/vnAi5">go.shuttle.eu/vnAi5</a>	<a href="http://go.shuttle.eu/Ew70">go.shuttle.eu/Ew70</a>
<b>Options</b>	2× RS-232, Wi-Fi module with external antennas	



# 19.5" screen, multi-touch, capacitive



**P92U**

**P92U3**

**P92U5**

**CASE CHARACTERISTICS**

- Plastic case with integrated touchscreen
- Available in black or white
- Movable stand or 75/100 VESA mount
- Connectors on the side and bottom of the case
- One bay for a 2.5" HDD/SSD
- One slot for an NVMe SSD
- Camera with 2 megapixel
- Stereo speaker and microphone
- Always on jumper
- External power supply
- Weight 4,290 g
- Fanless cooling
- IP54 protection of front panel
- Ambient temperature range 0–40 °C
- Air humidity range 10–90 %
- 4.4 × 48.7 × 32.1 cm (LWH)

**PERFORMANCE FEATURES**

<b>Display</b>	1600×900, capacitive 10-point multi-touch screen, 49.5 cm (19.5")		
<b>Processor</b>	Intel Celeron 5205U	Intel Core i3-10110U	Intel Core i5-10210U
<b>Slots</b>	1× M.2-2230, 1× M.2-2280		
<b>Empty slots</b>	1× M.2-2280		
<b>Memory</b>	Up to 2× 32 GB DDR4 SO-DIMM (64GB)		
<b>Graphics</b>	Intel UHD Graphics for 10 <sup>th</sup> Gen Intel Processors		
<b>Display connectors</b>	1× HDMI 1.4b, 1× VGA		
<b>Network</b>	1× Gigabit Ethernet (Intel i219), Wi-Fi (ac), Bluetooth 4.2		
<b>External connections</b>	4× USB 3.2 Gen 1 (5 Gbit) type A, 2× USB 2.0 type A, audio, mic		
<b>Internal connections</b>	1× USB 2.0 type A, 1× I <sup>2</sup> C, 1× SATA		
<b>Drives</b>	1× 2.5" SATA, 1× NVMe, SD card reader		
<b>Power supply</b>	65 Watt, 19 Volt DC		
<b>Supported operating voltage</b>	12 Volt ±5 % and 19 Volt ±5 %		
<b>OS support</b>	Windows 10, Windows 11, Linux (64 Bit)		
<b>Further information</b>	<a href="http://go.shuttle.eu/mDASL">go.shuttle.eu/mDASL</a>	<a href="http://go.shuttle.eu/fZomA">go.shuttle.eu/fZomA</a>	<a href="http://go.shuttle.eu/Ckyac">go.shuttle.eu/Ckyac</a>
<b>Options</b>	NFC module, 1× Parallel + 2× RS-232 or 1× Parallel + 4× RS-232 + 1× DIO		



# 11.6" screen, multi-touch, capacitive

# Robust Panel PCs

XPC ALL-IN-ONE



## P22U

CASE CHARACTERISTICS

Plastic case with integrated touchscreen
Detachable cable collector box
Movable stand or 75/100 VESA mount
Connectors on the side and bottom of the case
One bay for a 2.5" HDD/SSD
One slot for an NVMe SSD
Camera with 1 megapixel
Speaker and microphone
External power supply
Weight 2,470 g
Fanless cooling
IP54 protection of front panel
Ambient temperature range 0–40 °C
Air humidity range 10–90 %
5.0 × 29.9 × 27.1 cm (LWH)

PERFORMANCE FEATURES

Display	1366×768, capacitive 10-point multi-touch screen, 29.5 cm (11.6")
Processor	Intel Celeron 5205U
Slots	1× M.2-2230, 1× M.2-2280
Empty slots	1× M.2-2230, 1× M.2-228
Memory	Up to 2× 32 GB DDR4 SO-DIMM (64 GB)
Graphics	Intel UHD Graphics for 10 <sup>th</sup> Gen Intel Processors
Display connectors	1× HDMI 1.4b, 1× VGA
Network	1× Gigabit Ethernet (Intel i219)
External connections	4× USB 3.2 Gen 1 (5 Gbit) type A, 2× USB 2.0 type A, 2× RS-232, audio, mic
Internal connections	1× USB 2.0 type A, I <sup>2</sup> C, 1× SATA
Drives	1× 2.5" SATA, 1× NVMe, SD card reader
Power supply	65 Watt, 19 Volt DC
Supported operating voltage	12 Volt ±5 % and 19 Volt ±5 %
OS support	Windows 10, Windows 11, Linux (64 Bit)
Further information	go.shuttle.eu/Slv0t
Options	2× RS-232, WiFi ac & Bluetooth module

# Heavy-duty Panel PCs

## 15.6" / 21.5" screen, multi-touch, capacitive

PANEL-PC



**P21WL01**

**M21WL01**

**P15WL01**

CASE CHARACTERISTICS

- Heavy aluminium housing with integrated touch screen
- Modular housing
- 100×100 VESA mount
- Connectors on the bottom of the case, protected by cover
- One bay for a 2.5" HDD / SSD (except P15WL01)
- One slot for an NVMe SSD
- Camera with 2 megapixel
- External power supply
- Weight 4,600–7,600 g
- Fanless cooling
- IP65 protection of front panel
- Ambient temperature range 0–40 °C
- Air humidity range 20–80 %
- P21: 4.9 × 54.3 × 33.4 cm (LWH)
- P15: 4.9 × 39.4 × 25.6 cm (LWH)

PERFORMANCE FEATURES

<b>Display</b>	1920×1080, capacitive 10-point multi-touch screen, 54.6 cm (21.5")	1920×1080, capacitive 10-point multi-touch screen, 54.6 cm (21.5"), anti-septic coating	1920×1080, kapazitiver 10-Punkt-Multi-Touchscreen, 39.6 cm (15.6")
<b>Processor</b>	Intel Core i7-8665UE, Intel Core i5-8365UE, Intel Core i3-8145UE, Intel Celeron 4305UE		Intel Core i5-8365UE
<b>Slots</b>	1× M.2-2230, 1× M.2-2280		
<b>Empty slots</b>	1× M.2-2280		
<b>Memory</b>	Up to 2× 32 GB DDR4 SO-DIMM (64 GB)		
<b>Graphics</b>	Depending on the selected processor		Intel UHD Graphics 620
<b>Display connectors</b>	1× HDMI 1.4b, 1× DVI-I		1× HDMI 1.4b, 1× VGA
<b>Network</b>	2× Gigabit Ethernet (Intel i211, Intel i219LM), Wi-Fi (ac), Bluetooth 4.2		1× Gigabit Ethernet (Intel I219LM), WLAN 5 (ac), Bluetooth 4.2
<b>External connections</b>	4× USB 3.2 Gen 1 (5 Gbit) type A, 3× RS-232, audio, mic		4× USB 3.2 Gen 1 (5 Gbit) typ A, 1× RS-232, audio, mic
<b>Internal connections</b>	1× SATA		—
<b>Drives</b>	1× 2.5" SATA, 1× NVMe		1× NVMe
<b>Power supply</b>	90 Watt, 19 Volt DC	90 Watt, 19 Volt DC, complies with IEC 60601-1, EN55011 and FCC Class B	90 Watt, 19 Volt DC
<b>Supported operating voltage</b>	19 Volt ±5 %		
<b>OS support</b>	Windows 10, Windows 11, Linux (64 Bit)		
<b>Further information</b>	go.shuttle.eu/xZXdB	go.shuttle.eu/fP7Gm	sales@shuttle.eu
<b>Options</b>	—		Module for extended input voltage range

# Fanless industrial PC, modular connectors

# Heavy-duty Box PCs



BOX-PC

## BPCWL02

## BPCWL03

## BPCAL02

## BPCAL03

CASE CHARACTERISTICS

- Multi-reinforced aluminium and steel housing
- Individual operating positions, ready for VESA/wall mount
- Connectors on the front and rear
- One slot for an NVMe SSD
- External power supply
- Weight 2850 g
- Fanless cooling
- Ambient temperature range 0 – 40 °C or –20 – 60 °C
- Air humidity range 0–90 %
- 16.9 × 25.5 × 5.7 cm (LWH)

PERFORMANCE FEATURES

	BPCWL02	BPCWL03	BPCAL02	BPCAL03
<b>Processor</b>	Intel Core i7-8665UE, Intel Core i5-8365UE, Intel Core i3-8145UE, Intel Celeron 4305UE		Intel Core i7-1255U, Intel Core i7-1265UE, Intel Core i5-1235U, Intel Core i5-1245UE, Intel Core i3-1215UE, Intel Celeron 7305E	
<b>Slots</b>	1× M.2-2230, 1× M.2-2280			
<b>Empty slots</b>	1× M.2-2280			
<b>Memory</b>	Up to 2× 32 GB DDR4 SO-DIMM (64 GB)		Up to 2× 32 GB DDR5 SO-DIMM (64 GB)	
<b>Graphics</b>	Depending on the selected processor			
<b>Display connectors</b>	1× HDMI 1.4b (further connections modularly expandable)		1× HDMI 2.0 (further connections modularly expandable)	
<b>Network</b>	2× Gigabit Ethernet (Intel i211, Intel i219LM)		1× 2,5 Gbit Ethernet (Intel i225), 1× Gigabit Ethernet (Intel i219LM)	
<b>External connections</b>	4× USB 3.2 Gen 1 (5 Gbit) type A, 1× RS-232, audio, mic		4× USB 3.2 Gen 2 (10 Gbit) type A, 1× RS-232, audio, mic	
<b>Internal connections</b>	—			
<b>Drives</b>	1× NVMe			
<b>Power supply</b>	90 Watt, 19 Volt DC	150 Watt, 19 Volt DC	90 Watt, 19 Volt DC	150 Watt, 19 Volt DC
<b>Supported operating voltage</b>	19 Volt ±5 %			
<b>Supported ambient temperature</b>	0 – 40 °C	–20 – 60 °C	0 – 40 °C	–20 – 60 °C
<b>OS support</b>	Windows 10, Windows 11, Linux (64 Bit)			
<b>Further information</b>	go.shuttle.eu/3gTYi	go.shuttle.eu/Vzu0w	sales@shuttle.eu	
<b>Options</b>	Two additional graphics ports, additional COM ports, additional USB 2.0 ports, additional network ports, DIO ports, Wi-Fi/Bluetooth, 4G/LTE function, ear mount, module for extended voltage range			

# Compact Embedded PCs

# Suitable for control cabinets, fanless

EDGE



## EN01J4

**CASE CHARACTERISTICS**

Steel chassis for different operating positions
Desktop PC, ready for VESA-/DIN rail and wall mount
Connectors on the side and rear
One slot for an LTE/4G module
Slot for a nano SIM card
Standard Euroblock 2-pin power supply connector
Status-LED
Weight 480 g
Ambient temperature range 0–40 °C
Air humidity range 10–90 %
9.2 × 5.4 × 9 cm (LWH)

**PERFORMANCE FEATURES**

<b>Processor</b>	Pentium J4205
<b>Slots</b>	1× M.2-3032 B
<b>Empty slots</b>	1× M.2-3032 B
<b>Memory</b>	8 GB
<b>Graphics</b>	Intel HD Graphics 505
<b>Display connectors</b>	1× HDMI 1.4b
<b>Network</b>	1× Gigabit Ethernet (Realtek RTL8119I-CG)
<b>External connections</b>	2× USB 3.2 Gen 1 (5 Gbit) type A, 1× Micro USB 2.0
<b>Internal connections</b>	I/O header with two serial ports, 4× GPIO, I <sup>2</sup> C
<b>Drives</b>	64 GB Flash, SD card reader
<b>Power supply</b>	—
<b>Supported operating voltage</b>	12 Volt ±5 % to 19 Volt ±5 %
<b>OS support</b>	Windows 10, Windows 11, Linux (64 Bit)
<b>Further information</b>	<a href="http://go.shuttle.eu/VJ1UY">go.shuttle.eu/VJ1UY</a>
<b>Options</b>	Wi-Fi 5 (ac) & Bluetooth module, Wi-Fi 6 (ax) & Bluetooth, HDMI capture card, PoE module, PSE module, LTE antennas, power supply

# 1.3 litre format, fanless

# Robust Mini PCs



XPC SLIM

## DS20UV2

## DS20U3V2

## DS20U5V2

## DS20U7V2

CASE CHARACTERISTICS

- Steel chassis for different operating positions
- Stand for vertical operation and VESA-/wall mount
- Connectors on the front and rear
- One bay for a 2.5" HDD/SSD
- One slot for an NVMe SSD
- Status LEDs
- Remote power on connector
- Always on jumper
- External power supply
- Weight 1,430–1,500 g
- Fanless cooling
- Ambient temperature range 0–40 °C
- Air humidity range 10–90 %
- 20.0 × 16.5 × 3.95 cm (LWH)

PERFORMANCE FEATURES

	DS20UV2	DS20U3V2	DS20U5V2	DS20U7V2
<b>Processor</b>	Intel Celeron 5205U	Intel Core i3-10110U	Intel Core i5-10210U	Intel Core i7-10510U
<b>Slots</b>		1× M.2-2230, 1× M.2-2280		
<b>Empty slots</b>		1× M.2-2230, 1× M.2-2280		
<b>Memory</b>		Up to 2× 32 GB DDR4 S0-DIMM (64 GB)		
<b>Graphics</b>		Depending on the selected processor		
<b>Display connectors</b>		1× HDMI 2.0b, 1× DisplayPort 1.2, 1× VGA		
<b>Network</b>		1× 2,5 Gbit Ethernet (Intel i225), 1× Gigabit Ethernet (Intel i219LM)		
<b>External connections</b>	4× USB 3.2 Gen 1 (5 Gbit) type A, 4× USB 2.0 type A, 1× RS-232, audio, mic, Wi-Fi antennas		4× USB 3.2 Gen 2 (10 Gbit) type A, 4× USB 2.0 type A, 1× RS-232, audio, mic, Wi-Fi antennas	
<b>Internal connections</b>		1× SATA		
<b>Drives</b>		1× 2.5" SATA, 1× NVMe, SD card reader		
<b>Power supply</b>		65 Watt, 19 Volt DC		
<b>Supported operating voltage</b>		12 Volt ±5 % and 19 Volt ±5 %		
<b>OS support</b>		Windows 10, Windows 11, Linux (64 Bit)		
<b>Further information</b>	<a href="http://go.shuttle.eu/8fcLr">go.shuttle.eu/8fcLr</a>	<a href="http://go.shuttle.eu/xQFBb">go.shuttle.eu/xQFBb</a>	<a href="http://go.shuttle.eu/bKtaq">go.shuttle.eu/bKtaq</a>	<a href="http://go.shuttle.eu/anDQ7">go.shuttle.eu/anDQ7</a>
<b>Options</b>	Wi-Fi 5 (ac) & Bluetooth module, Wi-Fi 6 (ax) & Bluetooth, LTE kit, DIN rail mount, 19" 2U rack mount kit, cable for external power button			

# Robust Mini PCs

1.3 litre format, fanless

XPC SLIM



CASE CHARACTERISTICS

- Steel chassis for different operating positions
- Desktop PC, ready for VESA-/ wall mount
- Connectors on the front and rear
- One bay for a 2.5" HDD/SSD
- One slot for an NVMe SSD
- Status LEDs
- Remote power on connector
- Always on jumper
- External power supply
- Weight 1,300 g
- Fanless cooling
- Ambient temperature range 0–40 °C
- Air humidity range 10–90 %
- 19.0 × 16.5 × 4.3 cm (LWH)

PERFORMANCE FEATURES

	DL20NV2	DL20N6V2
Processor	Intel Celeron N4505	Intel Pentium Silver N6005
Slots	1× M.2-2230, 1× M.2-2280	
Empty slots	1× M.2-2280	
Memory	Up to 2× 8 GB DDR4 SO-DIMM (16 GB)	
Graphics	Intel UHD Graphics	
Display connectors	1× HDMI 2.0b, 1× DisplayPort 1.4a, 1× VGA	
Network	1× 2,5 Gigabit Ethernet (Intel i225)	
External connections	2× USB 3.2 Gen 2 (10 Gbit) type A, 2× USB 3.2 Gen 1 (5 Gbit) type A, 2× USB 2.0 type A, 2× RS-232, audio, mic,	
Internal connections	1× SATA	
Drives	1× 2.5" SATA, 1× NVMe, SD card reader	
Power supply	40 Watt, 19 Volt DC	
Supported operating voltage	12 Volt ±5 % and 19 Volt ±5 %	
OS support	Windows 10, Windows 11, Linux (64 Bit)	
Further information	<a href="http://go.shuttle.eu/4LwrC">go.shuttle.eu/4LwrC</a>	<a href="http://go.shuttle.eu/w97mQ">go.shuttle.eu/w97mQ</a>
Options	Wi-Fi 5 (ac) & Bluetooth module, Wi-Fi 6 (ax) & Bluetooth, LTE kit, DIN rail mount, vertical stand, 19" 2U rack mount kit, cable for external power button	



# 1.3 litre format, multi-screen support

# Robust Mini PCs

XPC SLIM



**DH02U**

**DH32U**

**DH32U5**

CASE CHARACTERISTICS

- Steel chassis for different operating positions
- Desktop PC, ready for VESA- / wall mount
- Connectors on the front and rear
- One bay for a 2.5" HDD/SSD
- One slot for an NVMe SSD
- Status LEDs
- Remote power on connector
- Always on jumper
- External power supply
- Weight 1,030 g
- Heatpipe cooling
- Two linear controlled fans (60 and 50 mm)
- Ambient temperature range 0–50 °C
- Air humidity range 10–90 %
- 19.0 × 16.5 × 4.3 cm (LWH)

PERFORMANCE FEATURES

	DH02U	DH32U	DH32U5
<b>Processor</b>	Intel Celeron 3865U	Intel Pentium Gold 7505	Intel Core i5-1135G7
<b>Slots</b>		1× M.2-2230, 1× M.2-2280	
<b>Empty slots</b>		1× M.2-2230, 1× M.2-2280	
<b>Memory</b>	Up to 2× 16 GB DDR4 SO-DIMM (32 GB)	Up to 2× 32 GB DDR4 SO-DIMM (64 GB)	
<b>Graphics</b>	NVIDIA GeForce GTX 1050, 4 GB	Intel UHD Graphics for 11 <sup>th</sup> Gen Intel Processors	
<b>Display connectors</b>		4× HDMI 2.0b	
<b>Network</b>	1× Gigabit Ethernet (Intel i211)	2× Gigabit Ethernet (Intel i211)	
<b>External connections</b>	4× USB 3.2 Gen 1 (5 Gbit) type A, 2× USB 2.0 type A, 1× RS-232, audio, mic	4× USB 3.2 Gen 1 (10 Gbit) type A, 4× USB 3.2 Gen 1 (5 Gbit) type A, 2× RS-232, audio, mic	
<b>Internal connections</b>		Audio I/O, VGA, 1× SATA	
<b>Drives</b>	1× 2.5" SATA, 1× NVMe	1× 2.5" SATA, 1× NVMe, SD card reader	
<b>Power supply</b>	120 Watt, 19 Volt DC	90 Watt, 19 Volt DC	
<b>Supported operating voltage</b>		19 Volt ±5 %	
<b>OS support</b>	Windows 10, Linux (64 Bit)	Windows 10, Windows 11, Linux (64 Bit)	
<b>Further information</b>	go.shuttle.eu/Kwfaq	go.shuttle.eu/bThZN	go.shuttle.eu/AKms3
<b>Options</b>	Wi-Fi 5 (ac) & Bluetooth module, Wi-Fi 6 (ax) & Bluetooth, DIN rail mount, vertical stand, 19" 2U rack mount kit, cable for external power button		

# Robust Mini PCs

# 1.3 litre format, heatpipe cooling

XPC SLIM



**DH670**

**DH610**

**DH610S**

**CASE CHARACTERISTICS**

- Steel chassis for different operating positions
- Desktop PC, ready for VESA-/ wall mount
- Connectors on the front and rear
- One bay for a 2.5" HDD/SSD
- One slot for an NVMe SSD
- Status LEDs
- Remote power on connector
- Always on jumper
- External power supply
- Weight 1,300 g
- Heatpipe cooling
- Two linear controlled fans (60 mm)
- Ambient temperature range 0–50 °C
- Air humidity range 10–90 %
- 19.0 × 16.5 × 4.3 cm (LWH)

**PERFORMANCE FEATURES**

<b>Processor socket</b>	LGA 1700, TDP max. 65 Watt		
<b>Processor compatibility</b>	Intel Core i3/i5/i7/i9, Pentium, Celeron (12 <sup>th</sup> /13 <sup>th</sup> Generation, 'Alder Lake' & 'Raptor Lake')		
<b>Slots</b>	1× M.2-2230, 1× M.2-2280		
<b>Empty slots</b>	1× M.2-2230, 1× M.2-2280		
<b>Memory</b>	Up to 2× 32 GB DDR4 SO-DIMM (64 GB)		
<b>Graphics</b>	Depending on the selected processor		
<b>Display connectors</b>	2× HDMI 2.0b, 2× DisplayPort 1.4	1× HDMI 2.0b, 2× DisplayPort 1.4	1× HDMI 2.0b, 1× DisplayPort 1.4
<b>Network</b>	2× Gigabit Ethernet (i210/i211), DH670V2: with 2× 2,5 Gbit (Intel i225)	1× 2,5 Gbit Ethernet (Intel i225), 1× Gigabit Ethernet (Intel i219V/LM)	1× Gigabit Ethernet (Intel i219V/LM)
<b>External connections</b>	4× USB 3.2 Gen 2 (10 Gbit) type A, 3× USB 3.2 Gen 1 (5 Gbit) type A, 1× USB 3.2 Gen 1 (5 Gbit) type C, 2× RS-232, audio, mic	3× USB 3.2 Gen 1 (5 Gbit) type A, 1× USB 3.2 Gen 1 (5 Gbit) type C, 4× USB 2.0 type A, audio, mic	
<b>Internal connections</b>	VGA, 1× SATA		
<b>Drives</b>	1× 2.5" SATA, 1× NVMe, SD card reader, DH670V2: without SD card reader	1× 2.5" SATA, 1× NVMe	
<b>Power supply</b>	120 Watt, 19 Volt DC		
<b>Supported operating voltage</b>	19 Volt ±5 %		
<b>OS support</b>	Windows 10, Windows 11, Linux (64 Bit)		
<b>Further information</b>	go.shuttle.eu/q5UQg	go.shuttle.eu/15lai	go.shuttle.eu/gWINq

<b>Options</b>	VGA connector, Wi-Fi 5 (ac) & Bluetooth module, Wi-Fi 6 (ax) & Bluetooth, LTE kit, DIN rail mount, vertical stand, 19" 2U rack mount kit, cable for external power button	VGA connector, Wi-Fi 5 (ac) & Bluetooth module, Wi-Fi 6 (ax) & Bluetooth, LTE kit, VESA mount, DIN rail mount, vertical stand, 19" 2U rack mount kit, cable for external power button
----------------	---	---



# 1.3 litre format, heatpipe cooling

# Robust Mini PCs



**DH470C**

XPC SLIM

PERFORMANCE FEATURES

Processor socket	LGA 1200, TDP max. 65 Watt
Processor compatibility	Intel Core i3/i5/i7/i9, Pentium, Celeron (10 <sup>th</sup> Generation, 'Comet Lake')
Slots	1× M.2-2230, 1× M.2-2280
Empty slots	1× M.2-2230, 1× M.2-2280
Memory	Up to 2× 32 GB DDR4 SO-DIMM (64 GB)
Graphics	Depending on the selected processor
Display connectors	1× HDMI 2.0a, 2× DisplayPort 1.2
Network	2× Gigabit Ethernet (Intel i210-AT)
External connections	4× USB 3.2 Gen 2 (10 Gbit) type A, 3× USB 3.2 Gen 1 (5 Gbit) type A, 1× USB 3.2 Gen 1 (5 Gbit) type C, 2× RS-232, audio, mic
Internal connections	VGA, 1× SATA
Drives	1× 2.5" SATA, 1× NVMe, SD card reader
Power supply	90 Watt, 19 Volt DC
Supported operating voltage	19 Volt ±5 %
OS support	Windows 10, Windows 11, Linux (64 Bit)
Further information	<a href="http://go.shuttle.eu/yDRo0">go.shuttle.eu/yDRo0</a>
Options	VGA connector, Wi-Fi 5 (ac) & Bluetooth module, Wi-Fi 6 (ax) & Bluetooth, LTE kit, DIN rail mount, vertical stand, 19" 2U rack mount kit, cable for external power button

# Robust Mini PCs

# 3 litre format, heatpipe cooling

XPC SLIM



## XH310RV

## XH510G

CASE CHARACTERISTICS

- Steel chassis for different operating positions
- Desktop PC, ready for VESA-/ wall mount
- Connectors on the front and rear
- One to four 2.5" drive bays (SSD/HDD)
- One slot for an NVMe SSD
- One bay for an optical slimline drive (except XH510G)
- Status LEDs
- Remote power on connector (depending on model)
- Always on jumper
- External power supply
- Weight 2,200 g
- Heatpipe cooling
- Two linear controlled fans (60 mm)
- Ambient temperature range 0–50 °C
- Air humidity range 10–90 %
- 23.8 × 20.0 × 7.25 cm (LWH)

PERFORMANCE FEATURES

<b>Processor socket</b>	LGA 1151v2, TDP max. 65 Watt	LGA 1200, TDP max. 65 Watt
<b>Processor compatibility</b>	Intel Core i3/i5/i7/i9, Pentium, Celeron (8 <sup>th</sup> /9 <sup>th</sup> Generation, 'Coffee Lake')	Intel Core i3/i5/i7/i9, Pentium, Celeron (10 <sup>th</sup> /11 <sup>th</sup> Generation, 'Comet Lake' & 'Rocket Lake')
<b>Slots</b>	1× M.2-2230, 1× M.2-2280	1× M.2-2230, 2× M.2-2280, 1× PCI-Express-×16-4.0
<b>Empty slots</b>	1× M.2-2230, 1× M.2-2280	1× M.2-2230, 2× M.2-2280, 1× PCI-Express-×16-4.0
<b>Memory</b>	Up to 2× 16 GB DDR4 SO-DIMM (32 GB)	Up to 2× 32 GB DDR4 SO-DIMM (64 GB)
<b>Graphics</b>	Depending on the selected processor and PCIe graphics card	
<b>Display connectors</b>	1× HDMI 2.0a, 1× DisplayPort 1.2, 1× VGA	1× HDMI 2.0a, 1× DisplayPort 1.4
<b>Network</b>	2× Gigabit Ethernet (Intel i211)	1× Gigabit Ethernet (Intel i219LM)
<b>External connections</b>	4× USB 3.2 Gen 1 (5 Gbit) type A, 4× USB 2.0 type A, 2× RS-232, audio, mic	4× USB 3.2 Gen 1 (5 Gbit) type A, 4× USB 2.0 type A, audio, mic
<b>Internal connections</b>	1× USB 2.0, eDP, 3× SATA, 2× RS-232, LPC	VGA, 1× SATA
<b>Drives</b>	2× 2.5" SATA, 1× Slimline SATA, 1× NVMe	1× 2.5" SATA, 1× NVMe, 1× M.2-SATA
<b>Power supply</b>	90 Watt, 19 Volt DC	180 Watt, 19,5 Volt DC
<b>Supported operating voltage</b>	12 Volt ±5 % and 19 Volt ±5 %	19 Volt ±5 %
<b>OS support</b>	Windows 10, Windows 11, Linux (64 Bit)	
<b>Further information</b>	go.shuttle.eu/82f0s	go.shuttle.eu/A0WVH
<b>Options</b>	Wi-Fi 5 (ac) & Bluetooth module, Wi-Fi 6 (ax) & Bluetooth, vertical stand, VESA mount, 3× RS-232, 3.5" HDD rack, cable for external power button	VGA connector, Wi-Fi 5 (ac) & Bluetooth module, Wi-Fi 6 (ax) & Bluetooth, COM port, cable for external power button

## 3 litre format, heatpipe cooling

## Robust Mini PCs



**XH610**



**XH610V**

XPC SLIM

PERFORMANCE FEATURES

Processor socket	LGA 1700, TDP max. 65 Watt	
Processor compatibility	Intel Core i3/i5/i7/i9, Pentium, Celeron (12 <sup>th</sup> /13 <sup>th</sup> Generation, 'Alder Lake' & 'Raptor Lake')	
Slots	1× M.2-2230, 1× M.2-2280	
Empty slots	1× M.2-2230, 1× M.2-2280	
Memory	Up to 2× 32 GB DDR4 SO-DIMM (64 GB)	
Graphics	Depending on the selected processor and PCIe graphics card	
Display connectors	1× HDMI 2.0a, 1× DisplayPort 1.4, 1× VGA	
Network	1× 2,5 Gbit Ethernet (Intel I225), 1× Gigabit Ethernet (Intel I219LM)	
External connections	3× USB 3.2 Gen 1 (5 Gbit) Typ A, 1× USB 3.2 Gen 1 (5 Gbit) Typ C, 4× USB 2.0, 2× RS-232, Audio, Mic	
Internal connections	3× SATA (1× Slimline), 3× RS-232	
Drives	2× 2.5" SATA, 1× Slimline SATA, 1× NVMe	
Power supply	120 Watt, 19 Volt DC	
Supported operating voltage	12 Volt ±5 % and 19 Volt ±5 %	
OS support	Windows 10, Windows 11, Linux (64 Bit)	
Further information	<a href="https://go.shuttle.eu/vXrlw">go.shuttle.eu/vXrlw</a>	<a href="https://go.shuttle.eu/lq9X8">go.shuttle.eu/lq9X8</a>
Options	Wi-Fi 5 (ac) & Bluetooth module, Wi-Fi 6 (ax) & Bluetooth, 3× COM port, vertical stand, VESA mount, LTE kit, 3.5" HDD rack, cable for external power button	Wi-Fi 5 (ac) & Bluetooth module, Wi-Fi 6 (ax) & Bluetooth, vertical stand, VESA mount, LTE kit, 3.5" HDD rack, cable for external power button

# Robust Mini PCs

# Supports 2× PCIe

XPC SLIM



## XH510G2

CASE CHARACTERISTICS

- Steel chassis for different operating positions
- Desktop PC, ready for VESA-/ wall mount
- Connectors on the front and rear
- One bay for a 2.5" HDD/SSD
- One slot for an NVMe SSD
- Status LEDs
- Remote power on connector
- Always on jumper
- External power supply
- Weight 2,980 g
- Heatpipe cooling
- Two linear controlled fans (60 mm)
- Ambient temperature range 0–50 °C
- Air humidity range 10–90 %
- 25.0 × 20.0 × 9.5 cm (LWH)

PERFORMANCE FEATURES

Processor socket	LGA 1200, TDP max. 65 Watt
Processor compatibility	Intel Core i3/i5/i7/i9, Pentium, Celeron (10 <sup>th</sup> /11 <sup>th</sup> Generation, 'Comet Lake' & 'Rocket Lake')
Slots	1× M.2-2230, 2× M.2-2280, 1× PCI-Express-×16-4.0, 1× PCI-Express-×1-3.0
Empty slots	1× M.2-2230, 2× M.2-2280, 1× PCI-Express-×16-4.0, 1× PCI-Express-×1-3.0
Memory	Up to 2× 32 GB DDR4 SO-DIMM (64 GB)
Graphics	Depending on the selected processor and PCIe graphics card
Display connectors	1× HDMI 2.0a, 1× DisplayPort 1.4
Network	1× Gigabit Ethernet (Intel i219LM)
External connections	4× USB 3.2 Gen 1 (5 Gbit) type A, 4× USB 2.0 type A, audio, mic
Internal connections	VGA, 1× SATA
Drives	1× 2.5" SATA, 1× NVMe, 1× M.2-SATA
Power supply	180 Watt, 19,5 Volt DC
Supported operating voltage	19 Volt ±5 %
OS support	Windows 10, Windows 11, Linux (64 Bit)
Further information	<a href="http://go.shuttle.eu/lhdRf">go.shuttle.eu/lhdRf</a>
Options	VGA connector, Wi-Fi 5 (ac) & Bluetooth module, Wi-Fi 6 (ax) & Bluetooth, LTE kit, COM port, cable for external power button, extension for second power supply

# Compact mini server, for 4 HDDs

# Cube format



**SW580R8**

**SH570R8**

XPC CUBE

CASE CHARACTERISTICS

Aluminium case
Desktop PC
Connectors on the front and rear
4 bays for 3.5" HDD/SSD (alternatively 2.5" HDD/SSD with optional drive holder)
One to two slots for NVMe SSDs
Status LEDs
Remote power on connector (depending on model)
Internal power supply
Weight 3,500 g
Heatpipe cooling
Two linear controlled fans (92 mm and 80 mm)
Ambient temperature range 0–40 °C
Air humidity range 10–90 %
33.2 × 21.5 × 19.0 cm (LWH)

PERFORMANCE FEATURES

Processor socket	LGA 1200, TDP max. 125 Watt	
Processor compatibility	Intel Core i3/i5/i7/i9, Xeon, Pentium, Celeron (10 <sup>th</sup> /11 <sup>th</sup> Generation, 'Comet Lake' & 'Rocket Lake')	
Slots	1× M.2-2230, 2× M.2-2280, 1× PCIe-×16-3.0, 1× PCIe-×4-4.0	1× M.2-2230, 1× M.2-2280, 1× PCIe-×16-3.0, 1× PCIe-×4-4.0
Empty slots	1× M.2-2230, 2× M.2-2280, 1× PCIe-×16-3.0, 1× PCIe-×4-4.0	1× M.2-2230, 1× M.2-2280, 1× PCIe-×16-3.0, 1× PCIe-×4-4.0
Memory	Up to 4× 32 GB DDR4 DIMM (128 GB), ECC-compatible with Xeon processor	Up to 4× 32 GB DDR4 DIMM (128 GB)
Graphics	Depending on the selected processor and PCIe graphics card	
Display connectors	1× HDMI 2.0b, 2× DisplayPort 1.4	
Network	2× 2,5 Gbit Ethernet (Realtek 8125b), 2× Gigabit Ethernet (Intel i211/i219LM)	2× Gigabit Ethernet (Intel i211, Intel i219LM)
External connections	4× USB 3.2 Gen 2 (10 Gbit) type A, 1× USB 3.2 Gen 1 (5 Gbit) type C, 3× USB 3.2 Gen 1 (5 Gbit) type A, 4× USB 2.0 type A, audio, mic	
Internal connections	1× RS-232, 2× USB 2.0, 4× SATA, fan connector	
Drives	4× 2.5"/3.5" SATA, 1× NVMe, 1× M.2-SATA	4× 2.5"/3.5" SATA, 1× NVMe
Power supply	500 Watt	
Supported operating voltage	100 Volt to 240 Volt	
OS support	Windows 10, Windows 11, Linux (64 Bit)	
Further information	go.shuttle.eu/l8ZUW	go.shuttle.eu/3Fvr4
Options	850 Watt power supply, RS-232, Wi-Fi 5 (ac) & Bluetooth module, Wi-Fi 6 (ax) & Bluetooth, 2.5" HDD/SSD expansion frame, cable for external power button	

# Cube format

# Compact workstations, heatpipe cooling



XPC CUBE



## SH510R4

## SH610R4

**CASE CHARACTERISTICS**

Aluminium case
Desktop PC
Connectors on the front and rear
2 Bays for 3.5" HDD/SSD (4 Bays for 2.5" HDD/SDD with optional drive holder)
One slot for an NVMe SSD
One bay for optical 5.25" drive
Status LEDs
Remote power on connector (depending on model)
Internal power supply
Weight 3,500 g
Heatpipe cooling
One linear controlled fan (92 mm)
Ambient temperature range 0-40 °C
Air humidity range 10-90 %
33.2 × 21.5 × 19.0 cm (LWH)

**PERFORMANCE FEATURES**

<b>Processor socket</b>	LGA 1200, TDP max. 125 Watt	LGA 1700, TDP max. 125 Watt
<b>Processor compatibility</b>	Intel Core i3/i5/i7/i9, Pentium, Celeron (10 <sup>th</sup> /11 <sup>th</sup> Generation, 'Comet Lake' & 'Rocket Lake')	Intel Core i3/i5/i7/i9, Pentium, Celeron (12 <sup>th</sup> /13 <sup>th</sup> Generation, 'Alder Lake' & 'Raptor Lake')
<b>Slots</b>	1× M.2-2230, 1× M.2-2280, 1× PCIe-×16-4.0, 1× PCIe-×1-3.0	
<b>Empty slots</b>	1× M.2-2230, 1× M.2-2280, 1× PCIe-×16-4.0, 1× PCIe-×1-3.0	
<b>Memory</b>	Up to 2× 32 GB DDR4 DIMM (64 GB)	
<b>Graphics</b>	Depending on the selected processor and PCIe graphics card	
<b>Display connectors</b>	1× HDMI 2.0b, 1× DisplayPort 1.4, 1× VGA	1× HDMI 2.0b, 2× DisplayPort 1.4, 1× VGA
<b>Network</b>	1× Gigabit Ethernet (Intel i219LM)	2× Gigabit Ethernet (Intel i210AT, Intel i219LM Phy)
<b>External connections</b>	4× USB 3.2 Gen 1 (5 Gbit) type A, 4× USB 2.0 type A, audio, mic, Remote-Power-On	
<b>Internal connections</b>	1× RS-232, 1× USB 2.0, 4× SATA, fan connector	
<b>Drives</b>	3× 2.5" SATA/2× 3.5" SATA/1× 5.25" SATA, 1× NVMe	
<b>Power supply</b>	300 Watt	
<b>Supported operating voltage</b>	100 Volt to 240 Volt	
<b>OS support</b>	Windows 10, Windows 11, Linux (64 Bit)	
<b>Further information</b>	<a href="http://go.shuttle.eu/Zl8of">go.shuttle.eu/Zl8of</a>	<a href="http://go.shuttle.eu/s8dSo">go.shuttle.eu/s8dSo</a>
<b>Options</b>	PSU 500 Watt, PSU 850 Watt, RS-232, Wi-Fi 5 (ac) & Bluetooth module, Wi-Fi 6 (ax) & Bluetooth, 2.5" HDD/SSD expansion frame, cable for external power button	

# Compact workstations, heatpipe cooling

# Cube format



**SH570R6**



**SH570R6 Plus**

XPC CUBE

PERFORMANCE FEATURES

Processor socket	LGA 1200, TDP max. 125 Watt	
Processor compatibility	Intel Core i3/i5/i7/i9, Pentium, Celeron (10 <sup>th</sup> /11 <sup>th</sup> Generation, 'Comet Lake' & 'Rocket Lake')	
Slots	1× M.2-2230, 1× M.2-2280, 1× PCIe-×16-3.0, 1× PCIe-×4-4.0	
Empty slots	1× M.2-2230, 1× M.2-2280, 1× PCIe-×16-3.0, 1× PCIe-×4-4.0	
Memory	Up to 4× 32 GB DDR4 DIMM (128 GB)	
Graphics	Depending on the selected processor and PCIe graphics card	
Display connectors	1× HDMI 2.0b, 2× DisplayPort 1.4	
Network	2× Gigabit Ethernet (Intel i211, Intel i219LM)	
External connections	4× USB 3.2 Gen 2 (10 Gbit) type A, 4× USB 3.2 Gen 1 (5 Gbit) type C, 3× USB 3.2 Gen 1 (5 Gbit) type A, 4× USB 2.0 type A, audio, mic	
Internal connections	RS-232, 2× USB 2.0, 4× SATA, fan connector	
Drives	4× 2.5" SATA/2× 3.5" SATA/1× 5.25" SATA, 1× NVMe	
Power supply	300 Watt	500 Watt
Supported operating voltage	100 Volt to 240 Volt	
OS support	Windows 10, Windows 11, Linux (64 Bit)	
Further information	<a href="http://go.shuttle.eu/C3QHi">go.shuttle.eu/C3QHi</a>	<a href="http://go.shuttle.eu/cyF6p">go.shuttle.eu/cyF6p</a>
Options	PSU 500 Watt, PSU 850 Watt, RS-232, Wi-Fi 5 (ac) & Bluetooth module, Wi-Fi 6 (ax) & Bluetooth, 2.5" HDD/SSD expansion frame, cable for external power button	PSU 850 Watt, RS-232, Wi-Fi 5 (ac) & Bluetooth module, Wi-Fi 6 (ax) & Bluetooth, 2.5" HDD/SSD expansion frame, cable for external power button

# Compact Desktop PCs

# Space-saving format

XPC NANO



**NC10U**

**NC10U3**

**NC10U5**

**NC10U7**

**CASE CHARACTERISTICS**

- Plastic case for different operating positions
- Stand for vertical operation and VESA-/wall mount
- Connectors on the front, side and rear
- One bay for a 2.5" HDD/SSD
- One slot for an NVMe SSD
- Status LEDs
- Always on jumper
- External power supply
- Weight 400 g
- Heatpipe cooling
- One linear controlled fan (50 mm)
- Ambient temperature range 0-40 °C
- Air humidity range 10-90 %
- 14.2 × 14.2 × 4.2 cm (LWH)

**PERFORMANCE FEATURES**

	NC10U	NC10U3	NC10U5	NC10U7
<b>Processor</b>	Intel Celeron 4205U	Intel Core i3-8145U	Intel Core i5-8265U	Intel Core i7-8565U
<b>Slots</b>		1× M.2-2230, 1× M.2-2280		
<b>Empty slots</b>		1× M.2-2280		
<b>Memory</b>		Up to 2× 16 GB DDR4 SO-DIMM (32 GB)		
<b>Graphics</b>	Intel UHD Graphics 610	Intel UHD Graphics 620		
<b>Display connectors</b>		1× HDMI 2.0a, 1× DisplayPort 1.2		
<b>Network</b>		1× Gigabit Ethernet (Intel i211), Wi-Fi (n)		
<b>External connections</b>		1× USB 3.2 Gen 1 (5 Gbit) type A, 1× USB 3.2 Gen 1 (5 Gbit) type C, 2× USB 2.0 type A, 1× RS-232, audio/mic combo		
<b>Internal connections</b>		1× SATA		
<b>Drives</b>		1× 2.5" SATA, 1× NVMe, SD card reader		
<b>Power supply</b>		65 Watt, 19 Volt DC		
<b>Supported operating voltage</b>		19 Volt ±5 %		
<b>OS support</b>		Windows 10, Windows 11, Linux (64 Bit)		
<b>Further information</b>	<a href="http://go.shuttle.eu/iBzHY">go.shuttle.eu/iBzHY</a>	<a href="http://go.shuttle.eu/dse2m">go.shuttle.eu/dse2m</a>	<a href="http://go.shuttle.eu/d2jpc">go.shuttle.eu/d2jpc</a>	<a href="http://go.shuttle.eu/k4b5l">go.shuttle.eu/k4b5l</a>
<b>Options</b>	Wi-Fi (ac) & Bluetooth, DIN rail mount			



# Space-saving format

# Compact Desktop PCs

XPC NANO



**NC40U**

**NC40U3**

**NC40U5**

**NC40U7**

PERFORMANCE FEATURES

<b>Processor</b>	Intel Celeron 7305	Intel Core i3-1215U	Intel Core i5-1235U	Intel Core i7-1255U
<b>Slots</b>	1× M.2-2230, 2× M.2-2280			
<b>Empty slots</b>	1× M.2-2230, 2× M.2-2280			
<b>Memory</b>	Up to 2× 32 GB DDR4 SO-DIMM (64 GB)			
<b>Graphics</b>	Intel UHD Graphics for 12 <sup>th</sup> Gen Intel Processors		Intel Iris Xe	
<b>Display connectors</b>	1× HDMI 2.0b, 1× DisplayPort 1.4a, 1× USB type C			
<b>Network</b>	1× Gigabit Ethernet (Intel I211)			
<b>External connections</b>	2× USB 3.2 Gen 2 (10 Gbit) type A, 4× USB 3.2 Gen 1 (5 Gbit) type A, 1× USB 3.2 Gen 1 (5 Gbit) type C, 2× USB 2.0 type A, 1× RS-232, audio/mic combo			
<b>Internal connections</b>	1× SATA			
<b>Drives</b>	1× 2.5" SATA, 1× NVMe			
<b>Power supply</b>	65 Watt, 19 Volt DC			
<b>Supported operating voltage</b>	19 Volt ±5 %			
<b>OS support</b>	Windows 10, Windows 11, Linux (64 Bit)			
<b>Further information</b>	<a href="http://go.shuttle.eu/SiXMN">go.shuttle.eu/SiXMN</a>	<a href="http://go.shuttle.eu/Z178A">go.shuttle.eu/Z178A</a>	<a href="http://go.shuttle.eu/7tPxM">go.shuttle.eu/7tPxM</a>	<a href="http://go.shuttle.eu/NMgEf">go.shuttle.eu/NMgEf</a>
<b>Options</b>	Wi-Fi (ac) & Bluetooth			

# Android-based, fanless

XPC NANO



# Compact Embedded PCs



**NS02AV2**

**NS02EV2**

**NS03A**

**NS03E**

CASE CHARACTERISTICS

Plastic case for different operating positions
Desktop PC, ready for VESA-/wall mount
Connectors on the front and rear
Status LEDs
Remote power on connector
External power supply or PoE power source
Weight 270 g
Fanless cooling
Ambient temperature range 0–40 °C
Air humidity range 10–90 %
14.1 × 14.1 × 2.9 cm (LWH)

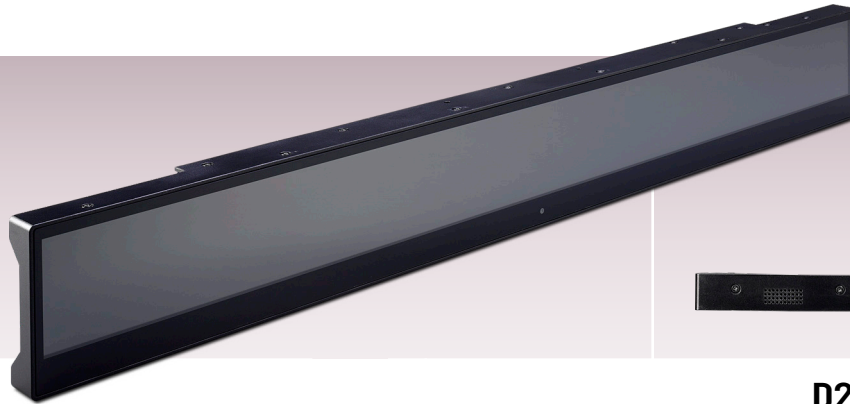
PERFORMANCE FEATURES

	NS02AV2		NS02EV2		NS03A		NS03E	
<b>Processor</b>	Rockchip RK3368 Octa-Core Cortex-A53 (ARM)				Rockchip RK3568 Quad-Core Cortex-A55 (ARM)			
<b>Slots</b>	—				1× M.2-2280			
<b>Empty slots</b>	—				1× M.2-2280			
<b>Memory</b>	2 GB DDR3L							
<b>Graphics</b>	PowerVR SGX6110							
<b>Display connectors</b>	1× HDMI 2.0				1× HDMI 2.0, 1× HDMI 1.4			
<b>Network</b>	1× Gigabit Ethernet (Realtek RTL8211F-CG), Wi-Fi (n), Bluetooth 5.0				1× Gigabit Ethernet (Realtek RTL8211E-VB-CG), Wi-Fi (n), Bluetooth 5.0			
<b>External connections</b>	4× USB 2.0 type A, audio				2× USB 3.2 Gen 1 (5 Gbit) type A, 2× USB 2.0 type A, audio			
<b>Internal connections</b>	—							
<b>Drives</b>	16 GB Flash, SD card reader				32 GB Flash, 1× NVMe, SD card reader			
<b>Power supply</b>	24 Watt, 12 Volt DC		PoE (IEEE 802.3at)		36 Watt, 12 Volt DC		PoE (IEEE 802.3at)	
<b>Supported Operating Voltage</b>	12 Volt		36–57 Volt		12 Volt		36–57 Volt	
<b>Operating system</b>	Android 8.1 ('Oreo')				Android 11, Debian 10			
<b>Further information</b>	go.shuttle.eu/eUZPg		go.shuttle.eu/KRaDw		go.shuttle.eu/H7tqv		go.shuttle.eu/7Q6ra	
<b>Options</b>	—							

# Biometric signage solution

# Bar-type Displays

SMART  
SIGNAGE



CASE CHARACTERISTICS

- Plastic case with integrated display
- Rail for VESA and clamp mount
- Connectors on the side and on the bottom
- Camera with 2 megapixel
- Speaker
- External power supply or PoE power source
- Cascading power connections
- Fanless cooling
- IP54 protection of front panel
- Ambient temperature range 0–40 °C
- Air humidity range 10–90 %
- 2.9 × 60.3 × 7.5 cm (LWH)

PERFORMANCE FEATURES

	D230 (Standalone)	D230 (Server-based)
Display	1920×158 (23.1")	
Processor	Rockchip RK3399, Cortex A72 Dual-Core, A53 Quad-Core (ARM)	
Slots	—	M.2-3042 (for LTE module)
Empty slots	—	M.2-3042 (for LTE module)
Memory	2 GB	
Graphics	Mali-T864	
Display connectors	—	
Network	1× Ethernet, Wi-Fi-ac, Bluetooth 5.0	
External connections	1× USB 2.0 Typ A, Audio	
Internal connections	—	
Drives	16 GB Flash, SD card reader	
Power supply	24 Watt, 12 Volt DC or PoE (IEEE 802.3at)	
Supported operating voltage	12 Volt ±5 % and 19,5 Volt ±5 % (PoE 48 Volt)	
Operating system	Android 7.1 ('Nougat')	
Further information	<a href="http://go.shuttle.eu/8ksvw">go.shuttle.eu/8ksvw</a>	
Options	Concatenation Accessory Kit	

\* Errors, technical specifications subject to change. All brand names are property of their respective owners.



Shuttle Computer Handels GmbH · Fritz-Strassmann-Str. 5 · 25337 Elmshorn · Germany  
Phone: +49 (0)4121-476 860 · E-Mail: sales@shuttle.eu

V2/2023

[WWW.SHUTTLE.EU](http://WWW.SHUTTLE.EU)